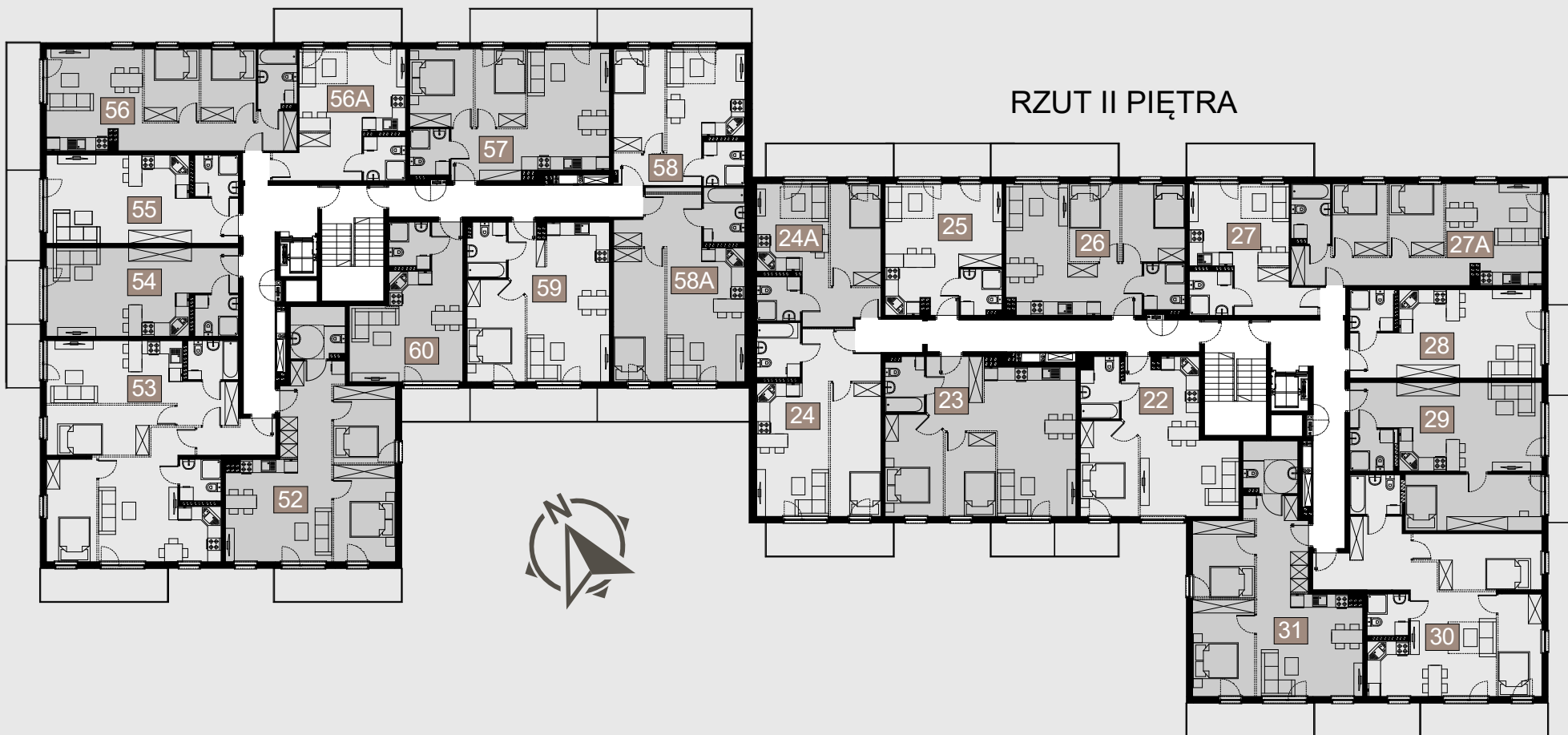




RZUT II PIĘTRA



22	42,70m ²
23	58,37m ²
24	44,91m ²
24A	32,89m ²
25	29,71m ²
26	45,73m ²
27	26,27m ²
27A	49,82m ²
28	33,17m ²
29	49,78m ²
30	63,71m ²
31	59,60m ²

52	59,58m ²
53	81,62m ²
54	33,17m ²
55	33,17m ²
56	49,82m ²
56A	28,04m ²
57	49,72m ²
58	34,55m ²
58A	47,47m ²
59	44,45m ²
60	29,00m ²